

DESCRIPTION

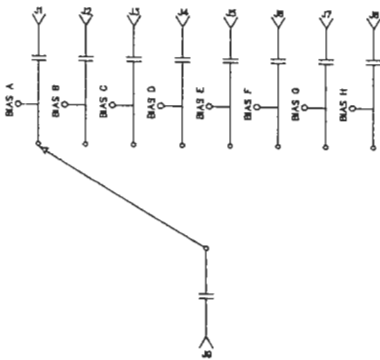
AMC MODEL MSN-8DT-05-MP-IND OPTION: 056, B09 IS A 0.5 TO 6 GHz, ABSORPTIVE/NON-REFLECTIVE, SINGLE POLE EIGHT THROW SWITCH HAVING AN INSERTION LOSS OF 3.5 dB MAXIMUM, AN ISOLATION OF 70 dB MINIMUM AND A VSWR OF 2.0:1.

SPECIFICATIONS:

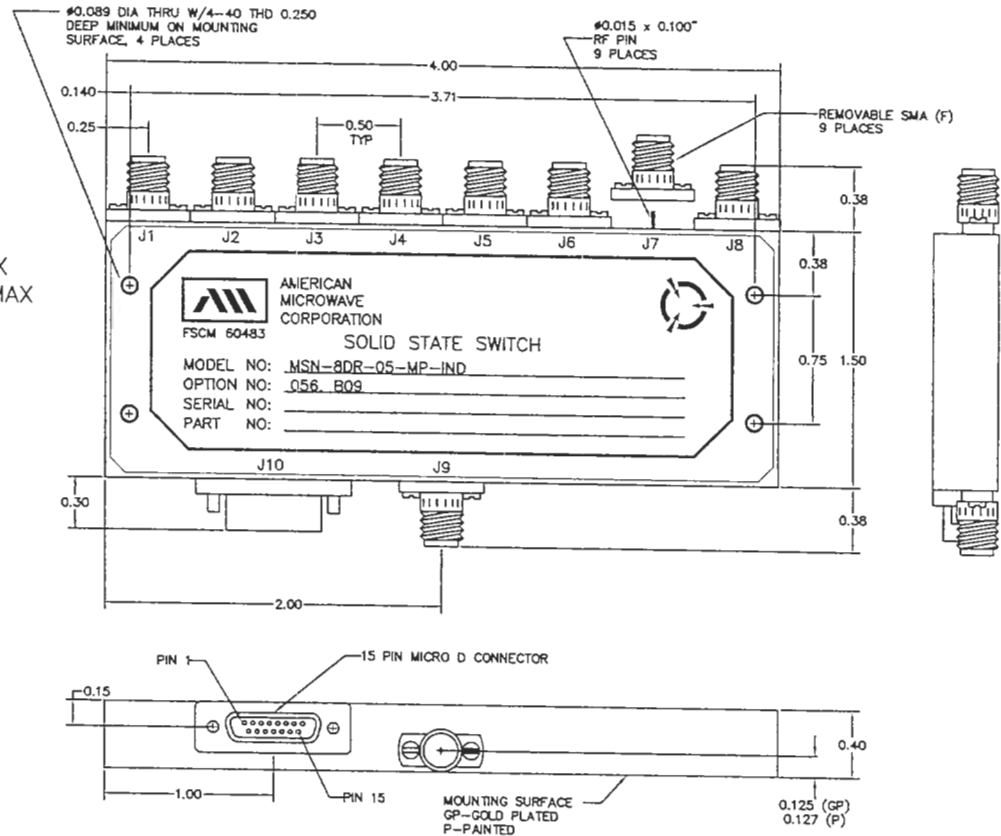
- FREQUENCY 0.5-6.0 GHz
- VSWR 2.0:1 MAX
- INSERTION LOSS 3.5 dB MAX
- ISOLATION 70 dB MIN
- SPEED RISE: 10ns TYPICAL, 15ns MAX
FALL: 10ns TYPICAL, 15ns MAX
DELAY ON: 75ns TYPICAL, 100ns MAX
DELAY OFF: 75 ns TYPICAL, 100ns MAX
- POWER INPUT (CW) +20dBm (STANDARD)
+10 dBm (HIGH SPEED)
- SURVIVAL POWER 1 WATT CW, 10W PEAK 1 usec
- CONTROL TTL LOGIC "0"=ON "1"=OFF
- POWER SUPPLY +5V @ 400 mA MAX
-5V @ 100 mA MAX

OPTIONS:

- 056 OPTIMIZED FROM 0.5-6.0 GHz
- B09 LOW INSERTION LOSS VERSION



| REVISIONS | | | | |
|-----------|------|---------------------------------|---------|----------|
| ZONE | REV. | DESCRIPTION | DATE | APPROVED |
| - | - | ORIGINAL RELEASE JOB# 403037N-2 | 4/14/04 | |



ENVIRONMENTAL RATINGS

- TEMPERATURE: -55°C TO +85°C (OPERATING)
-65°C TO +125°C (STORAGE)
- HUMIDITY: MIL-STD-202F, METHOD 103B COND. B
- SHOCK: MIL-STD-202F, METHOD 213B COND. B
- VIBRATION: MIL-STD-202F, METHOD 204D COND. B
- ALTITUDE: MIL-STD-202F, METHOD 105C COND. B
- TEMPERATURE CYCLE: MIL-STD-202F, METHOD 107D COND. A

NOTE: SPECIFICATIONS WILL VARY OVER OPERATING TEMPERATURE
NOTE: THE ABOVE SPECIFICATIONS ARE SUBJECT TO CHANGE OR REVISION

ALL DIMENSIONS ARE IN INCHES
TOLERANCES:
X.XX ±0.020
X.XXX ±0.010

AMERICAN MICROWAVE CORPORATION

7311-G GROVE ROAD
FREDERICK, MARYLAND 21704 USA
TEL: 301-662-4700 FAX: 301-662-4938
WEBSITE: www.americanmicrowavecorp.com
E-MAIL: sales@americanmicrowavecorp.com
ISO 9001:2000 CERTIFIED



| APPROVALS | | DATE | TITLE | | | |
|-----------|------------|---------|--|----------|----------|--------------|
| DRAWN | <i>EFE</i> | 4/14/04 | PRODUCT FEATURE MSN-8DT-05-MP-IND OPTION: 056, B09 0.5 TO 6 GHz, SINGLE POLE EIGHT THROW SWITCH | | | |
| REDRAWN | <i>JDJ</i> | 8/30/04 | SIZE | FSCM NO. | DWG NO. | REV. |
| ISSUED | <i>PA</i> | 9/30/04 | A | 60483 | 100-6964 | - |
| | | | SCALE | N:S | | SHEET 1 OF 3 |